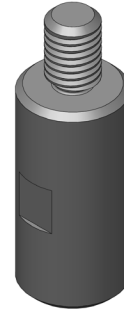


FIXED COUPLINGS FOR SECURING actuators, sensors, clamps.

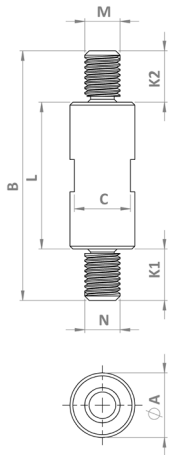
The fixed coupling pins, in the A-AF-10 series, are made of steel with surface protection treatment and are compatible with the entire range of test accessories for LiTeM pneumatic and electrodynamic machines. They are available in versions with male-male thread and male-female thread. Customised sizes can be made on request.



A-AF-10 Male-Female Coupling



A-AF-10 Male-Male Coupling



Male-male coupling pins

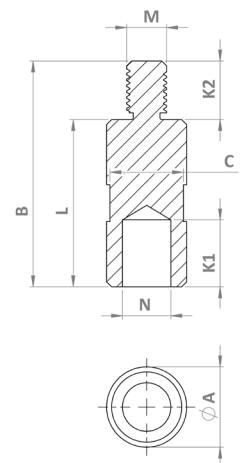
Code	Description	A	B	L	C	M	N	K1	K2
		mm							
A-AF-10-MM-01	Male-Male Pin M12-12 L20	22	55	20	19	M12	M12	17.5	17.5
A-AF-10-MM-02	Male-Male Pin M12-12 L50		85	50					
A-AF-10-MM-03	Male-Male Pin M12-12 L100		135	100					
A-AF-10-MM-04*	Male-Male Pin M12-16 L20		55	20		M12	M16*		
A-AF-10-MM-05*	Male-Male Pin M12-16 L50		85	50					
A-AF-10-MM-06*	Male-Male Pin M12-16 L100		135	100					

* Available with M16x1,5 screw

Perni di innesto maschio-femmina

Code	Description	A	B	L	C	M	N	K1	K2
		mm							
A-AF-10-MF-01	Male-Female Pin M12-12 L20	22	37.5	20	19	M12	M12	17.5	17.5
A-AF-10-MF-02	Male-Female Pin M12-12 L50		67.5	50					
A-AF-10-MF-03	Male-Female Pin M12-12 L100		117.5	100					
A-AF-10-MF-04*	Male-Female Pin M12-16 L20		37.5	20		M12	M16*		
A-AF-10-MF-05*	Male-Female Pin M12-16 L50		67.5	50					
A-AF-10-MF-06*	Male-Female Pin M12-16 L100		117.5	100					

* Available with M16x1,5 screw



Al fine di migliorare le prestazioni tecniche del prodotto, la società si riserva di apportare variazioni senza preavviso.
In order to improve the technical performances of the product, the company reserves the right to make any change without notice.

DRC Srl
PRODUCTION AND SALES
Via Montesicuro, 58/B - 60131 Ancona (Italy)
Tel (+39) 071 80 36 077

GENERAL INFORMATION
info@litem.info

EnginLAB Srl
RESEARCH AND DEVELOPMENT
Via Verità 3/a - 35131 Padova (Italy)
Tel (+39) 049 20 21 489

www.litem.info